

CREATED TO SERVE

Serving others is a great way to serve Jesus and get plugged into our church community at the same time. Serving encompasses all of our values and is an outward expression of the work Jesus is doing in each of us. God has uniquely equipped every person with specific skills and gifts. As Christ followers, using your God-given skills as a volunteer is a fantastic way to serve others and be a witness of the Good News within the community.

OUR VISION

A church passionate about Jesus' life, love, and work flowing through our lives, love, and work.

OUR VALUES

LOVE GOD

We love God because
He first loved us.
1 John 4:19

LOVE OTHERS

God's love empowers us
to love others.
John 13:35

SHARE GOOD NEWS

We share the goodness
of God's grace.
Acts 20:24

DO GOOD

God's good work in us
motivates us to do
good to all people.
Galatians 6:10

CREATED TO SERVE

Since it can be difficult to align schedules and balance other obligations, we have put together a list of different serving opportunities that may help engage you in creative ways you haven't considered before. This is not a comprehensive list, but a sample of some key areas designed for you to explore and pray about new ways you may be able to connect.

OUR MINISTRIES



KIDS AT MANOR



CARE TEAM



**STUDENTS AT
MANOR**



WORSHIP TEAM



**DISABILITY
MINISTRY**



TECH TEAM



**MISSIONAL
IMPACT MINISTRY**



FACILITIES TEAM

KIDS AT MANOR

BACKGROUND CHECKS REQUIRED & TRAINING PROVIDED FOR ALL ROLES

Sunday Morning Investor

Serve at least once a month during one of the Sunday morning services in our Kids at Manor classrooms (infant - 6th grade) for a 6 month commitment. Teach children the Bible from using curriculum and video resources. Give your love, time, and and passion to help lay a strong spiritual foundation. Must be able to lift, and sit on the floor if working with infants - preschool kids.

Stand Strong Team

Serve during our three night Kids event during July 11-13 (plus some training time) as Group Leaders, at check-in, with crafts or snacks, etc. Help kids to understand how we can stand strong on God's Word even when the pressures of this world try to tear us down!

MidWeek Investor

Serve during our Wednesday night programing for elementary aged kids from 6:15-8PM for a 6 month commitment . Help to teach, and lead kids through curriculum. Be committed to leading a small group of children. Help to lay a strong spiritual foundation for our kids.

Toddler Gym Leader

Must be able to lift and sit on the floor as we are working with younger kids. Choose from a variety of roles on Wednesday mornings (gym set-up prior to gam, lead a simple circle time with kids songs and prayer, connect with parents and caregivers, share the good news of Jesus, clean-up after 11am).

Moms Group Coordinator

Organize and lead ministry to equip, encourage, and empower moms to seek Christ in all aspects of motherhood. Take ownership of our ministry to moms and reimagine what this looks like! We're looking for a creative, self-driven, and passionate person (or people) to head this ministry area.

CONTACT ANDREA AT ANDREAK@MANORCHURCH.ORG



STUDENTS AT MANOR

BACKGROUND CHECKS REQUIRED & TRAINING PROVIDED FOR ALL ROLES

Wednesday Night Youth Leader

Invest into and co-lead our 7th-12th grade students by having a consistent presence at youth group on Wednesday nights from 6:45 – 8PM.

Help co-lead a small group.

Be open to serving in a supporting role to help carry out Wednesday nights (ex. lead a group game/icebreaker, teach a lesson, check-in students, oversee snacks, take photos/video for social media/church website).

Sunday Morning Youth Leader

Invest into and co-lead our 7th-12th grade students by having a consistent presence at our Sunday morning gatherings from 10:30 – 11:30AM.

Be a part of a teaching rotation, and engage with our students through group activities and discussions.

Special Events & Gatherings Volunteer

Assist in co-leading and carrying out special student ministry gatherings and events (ex. host a summer gathering at your home, drive students and leaders for an offsite event, serve in a role for a fundraising event, participate on a retreat/missions trip, fill in for a youth leader, etc.).

CONTACT BEAU AT BEAUW@MANORCHURCH.ORG



DISABILITY MINISTRY

One-to-One Buddy

Responsible to promote the inclusion of a child affected by disability by offering assistance and encouraging participation to the greatest extent possible. To provide care so that parent/guardian may attend a worship service or other church program.

Background checks and a desire to serve Christ and others required.

No prior experience required, training provided as needed.

Buddies should be loving, patient and energetic, dependable.

Should be available to serve for one service/1-2 times per month (6-12 month commitment).

JOURNEYS

Journeys Volunteer

Journeys is a group that encourages faith, fun and fellowship for single adults affected by disability.

Responsible to promote the inclusion of adults affected by disability in Journeys activities by offering assistance or accommodations necessary to allow full participation and enjoyment.

Assist with set-up, clean-up and activities at Journeys events.

Celebrate and encourage the unique giftedness of each individual.

Volunteers with musical abilities (vocalists, guitar, drums, keyboard) are welcome!

Background checks and a desire to serve Christ and others required.

Should be available to serve for 2 hours, one evening per month (Sept. – May) for a 9-month commitment.

Transportation Volunteer

Provide transportation to church for an individual affected by disability.

May involve lifting a wheelchair.

Should be patient and reliable.

Offer transportation once per month as needed.

Volunteer may state length of time they desire to commit.



CONTACT CHRISTIE AT CHRISTIEH@MANORCHURCH.ORG



MISSIONAL IMPACT MINISTRY

FIRST IMPRESSIONS TEAM

Cafe Team Member

Take drink orders, operate the cash register, and/or prepare coffee and other café drinks on Sunday mornings.
Serve from 8:30-11AM once a month.
Training will be provided.

Connector

Welcome all who come through our doors on a Sunday morning, so that all who come to worship with us will feel His love through the body here at Manor.
Serve from 8:45-9:05AM and 10:15-10:35AM one Sunday a month.
Must be able to stand or use mobility device in lobby for 25 minutes at once.
Background checks are required and training will be provided.

Missional Partner Support Team

Support our missionary partners locally and around the world through prayer, or by connecting with them through email/letter writing.

Manor Serves Team

Sign up during our Manor Serves Weeks for opportunities to serve our church family and various local community organizations.
Volunteer to serve within our local community throughout the year as your schedule allows.
Put our church values into action:

LOVE GOD

LOVE OTHERS

SHARE GOOD NEWS

DO GOOD

CONTACT RANDI AT RANDIW@MANORCHURCH.ORG



CARE TEAM

Meal Team Member

Provide a meal for a family after a person comes home from the hospital/rehab, or following the loss of a loved one.

Prepare approximately one meal every 2-3 months. You will be included on a list sent to people when an opportunity arises, but you are never obligated to participate.

Outdoor Work Team Member

Help members of our church family (and beyond) with yard clean up tasks like raking leaves, weeding, mulching, or trimming shrubs.

Work is typically done with a team of people, which makes this a great activity for the whole family – kids are welcome!

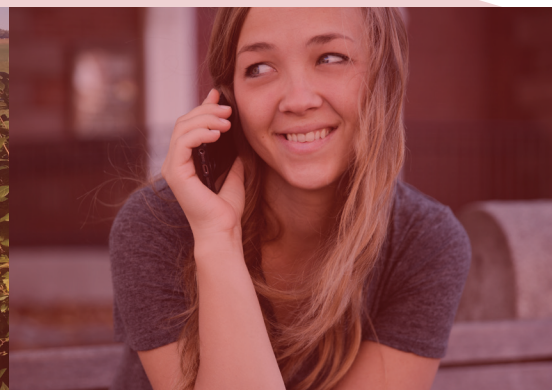
Opportunities occur 1-3 times per year.

Calling & Visiting Team Member

Make phone calls of encouragement to those who are not feeling well or call to check-up on one of our Seniors. Call 1-2 people per week at your convenience.

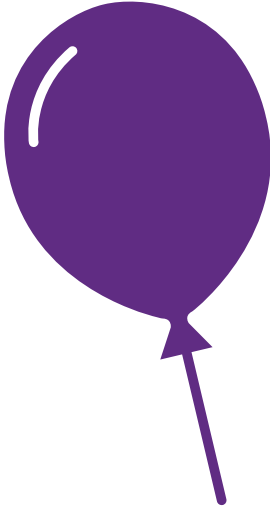
There is also the option to visit a person in the hospital, rehab or see one of our Seniors (at home or at a Seniors Center). Visit once a month when it's best for you.

CONTACT DAN AT DANS@MANORCHURCH.ORG



WORSHIP TEAM

Musicians



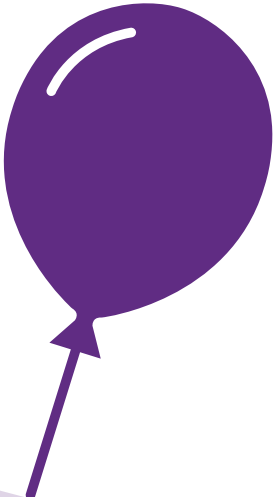
Musicians on the Worship Team lead our church family in worship during Sunday services and occasional special events.

When scheduled, participate in Tuesday night rehearsals (7-8:30PM), and soundcheck for Sunday services at 8AM.

Skillful hands and integrity of heart (Psalm 78:72): a heart for the Lord and skill with your instrument.

Your desired schedule will be taken into account when scheduling, whether you desire to participate twice a month, once a month, or once every other month.

Specific instrumental needs are **electric guitarists and acoustic guitarists**, but even if you don't play these instruments, feel free to reach out!

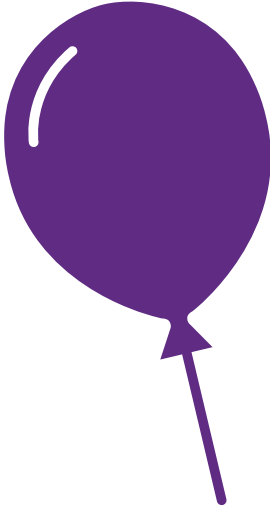


CONTACT GABI AT GABIB@MANORCHURCH.ORG



CHOIR

Vocalists



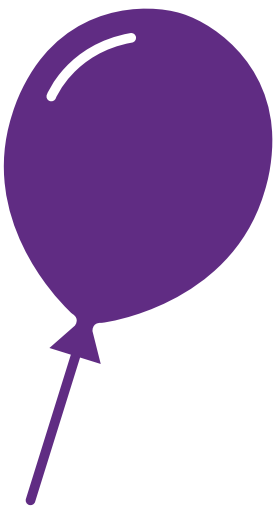
Our joy-filled choir rehearsals are on Wednesdays once a month (6:30-8PM).

We sing the following Sunday within the opening 15 minutes of both the 9 and 10:30AM services.

No previous musical experience necessary. Meet with Dan for an interview before attending your first rehearsal so he can get to know you.

Age 15 and older.

Join the fun of singing God's praises with others!



CONTACT DAN AT DANS@MANORCHURCH.ORG



TECH TEAM



Lighting Operator

Runs the church's lighting console during services which involves following cues listed on the weekly service order, and executing these cues as they come up in the service. Training is provided, and no previous experience is needed.

Slide Operator

Runs the church's media computer during services which provides lyrics, message notes, videos, and other content to the screens in the auditorium. Content is also sent to the live stream video system where it is integrated in as needed.

Training is provided, and no previous experience is needed. Knowledge of basic computer operation is helpful.



Camera Operator

Runs one of the church's two manned cameras on the main floor. These cameras are part of the video system that feeds the church's livestream, distributed building video feed, and in auditorium IMAG.

Follow the instruction of the video director on shot setup and selection.

Training is provided, and no previous experience is needed. A basic knowledge of photography or videography is helpful, but is not required.

CONTACT JOURDAN AT JOURDANM@MANORCHURCH.ORG



FACILITIES TEAM



Special Events Team


Set up before, and tear down after special events throughout the year as needed.

Ability to lift and move heavy objects is required.

Outdoor Maintenance & Yard Work Team

Help to maintain the exterior of our church property throughout the year as needed.

Ability to lift and move heavy objects is required.



CONTACT SCOTT AT SCOTTH@MANORCHURCH.ORG



Safety & Security Team

This team exists to monitor, prevent, and respond to emergency situations that may arise. The team is made up of people able to respond to critical situations in a calm manner. This may include people already in public safety or healthcare. Child safety and safety of others is a top priority.

Typical responsibility is during regular Sunday services and special large events..

The ability to easily move around the church building and campus to check and observe is required.

A background check is required and training is provided.

CONTACT BRYAN AT BRYANG@MANORCHURCH.ORG

